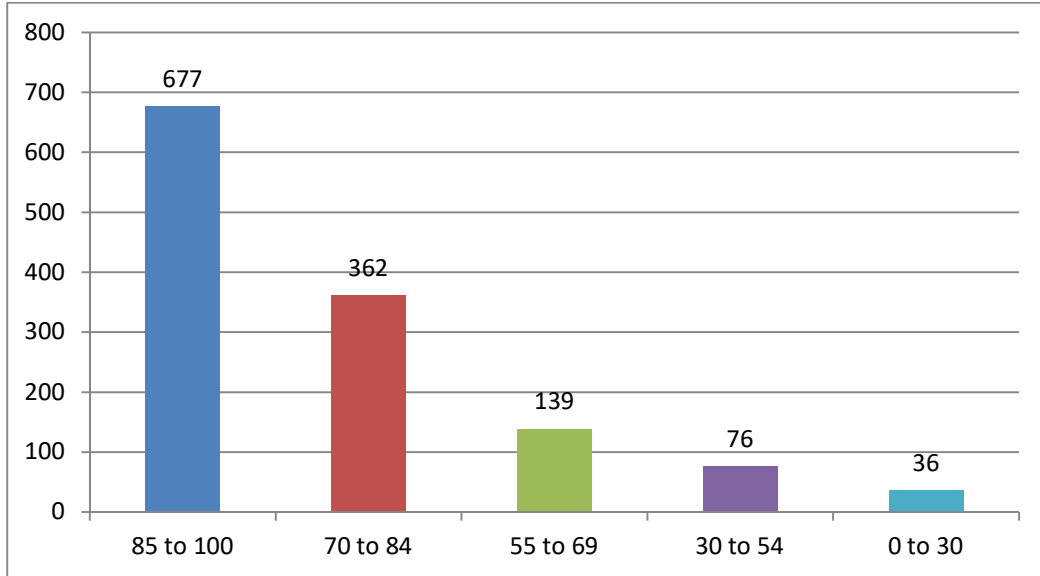




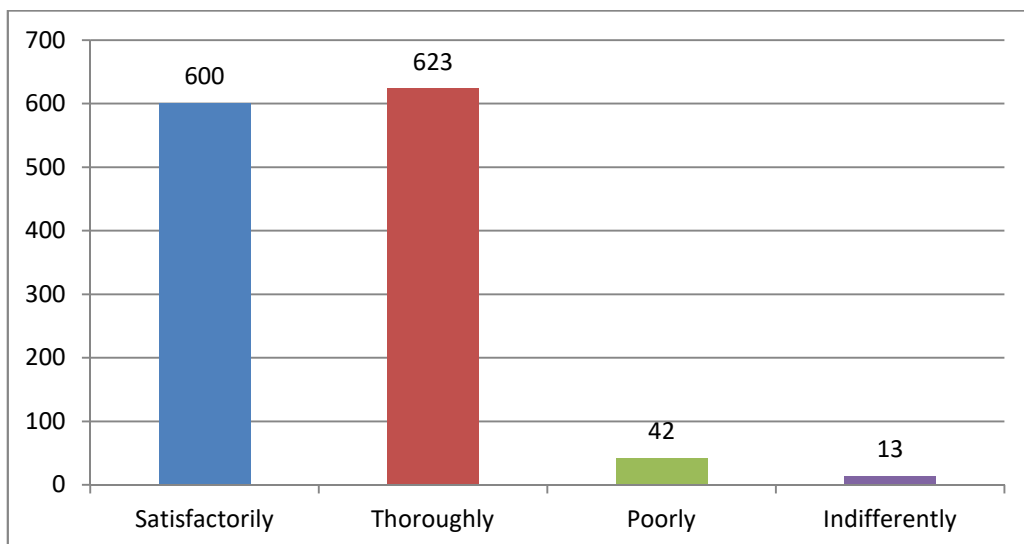
2.7.1: Online student satisfaction survey regarding teaching learning process

1) How much of the syllabus was covered in the class?



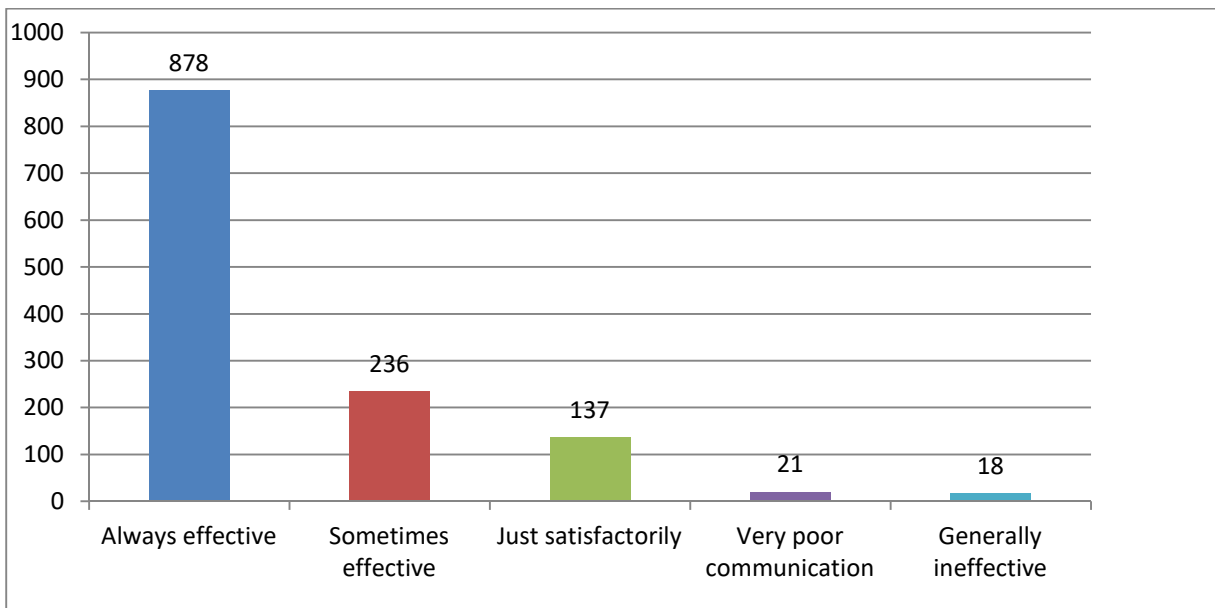
Total Respondents: 1290

2) How well did the teachers prepare for the classes?



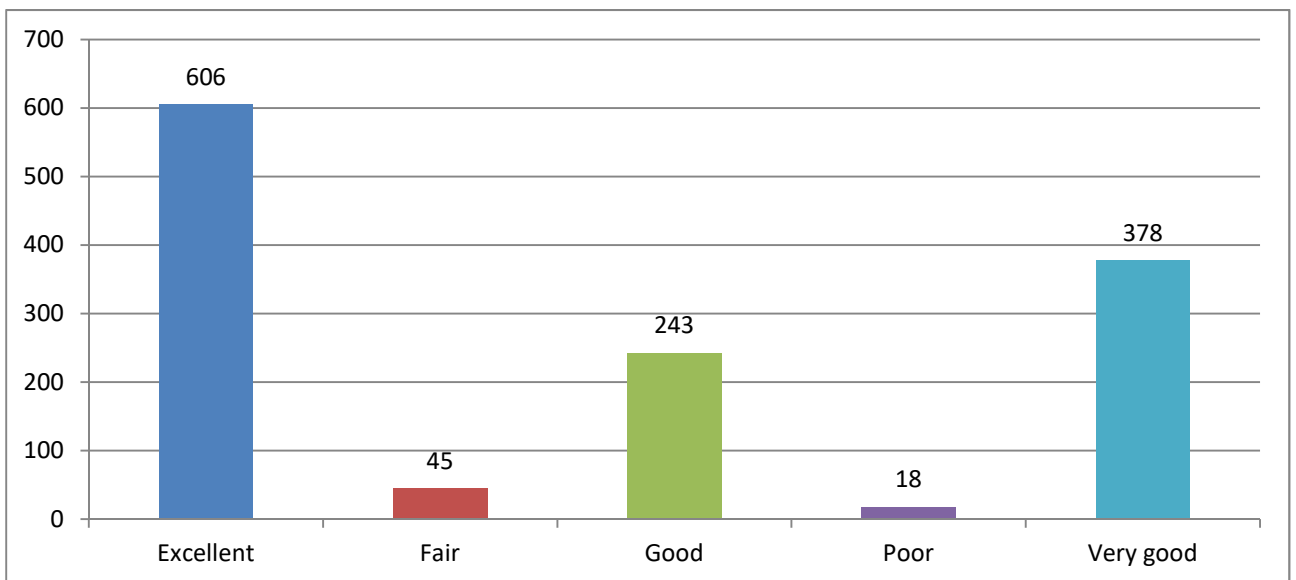
Total Respondents: 1290

3) How well were the teachers able to communicate?



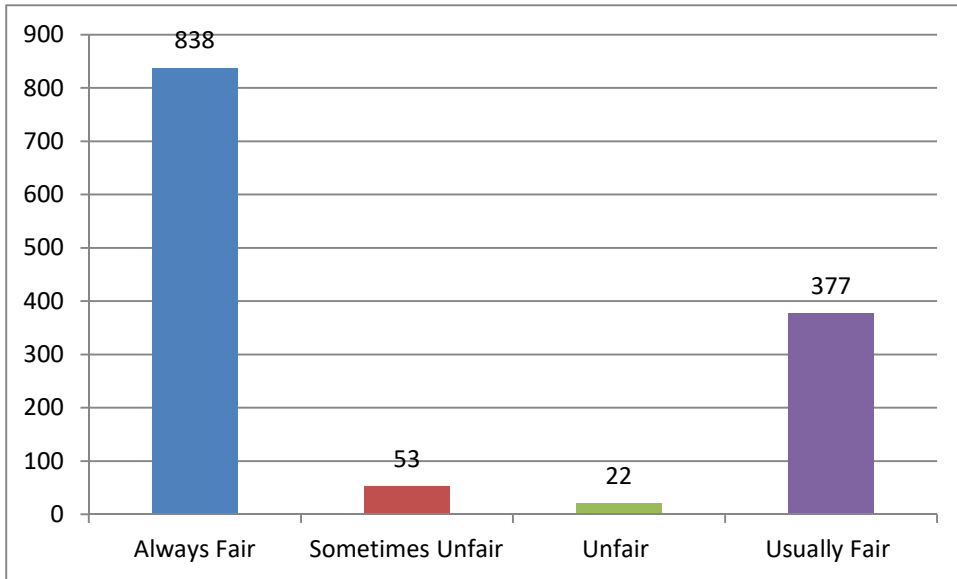
Total Respondents: 1290

4) The teacher's approach to teaching can best be described as



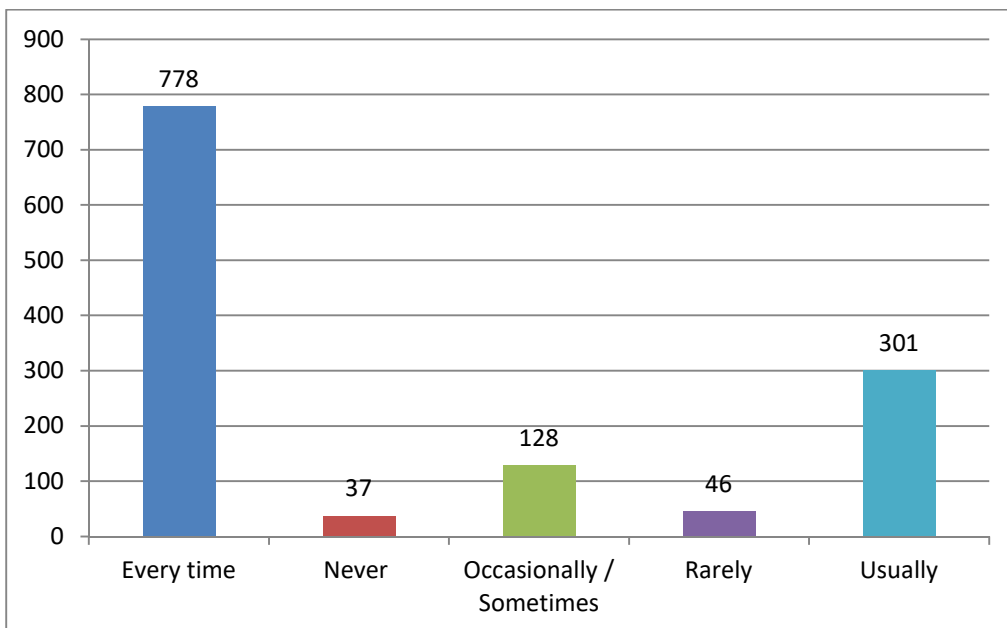
Total Respondents: 1290

5) Fairness of the internal evaluation process by the teachers.



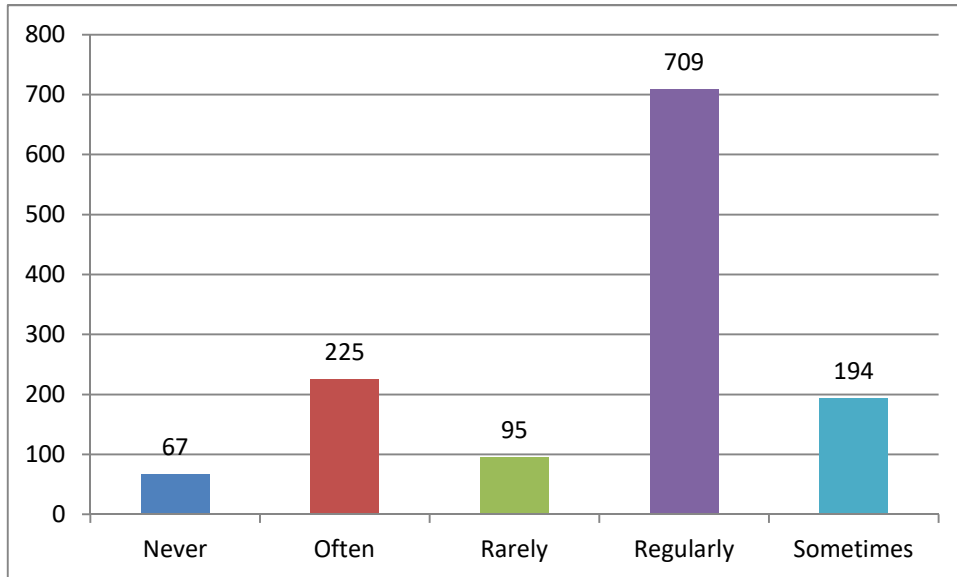
Total Respondents: 1290

6) Was your performance in assignments discussed with you?



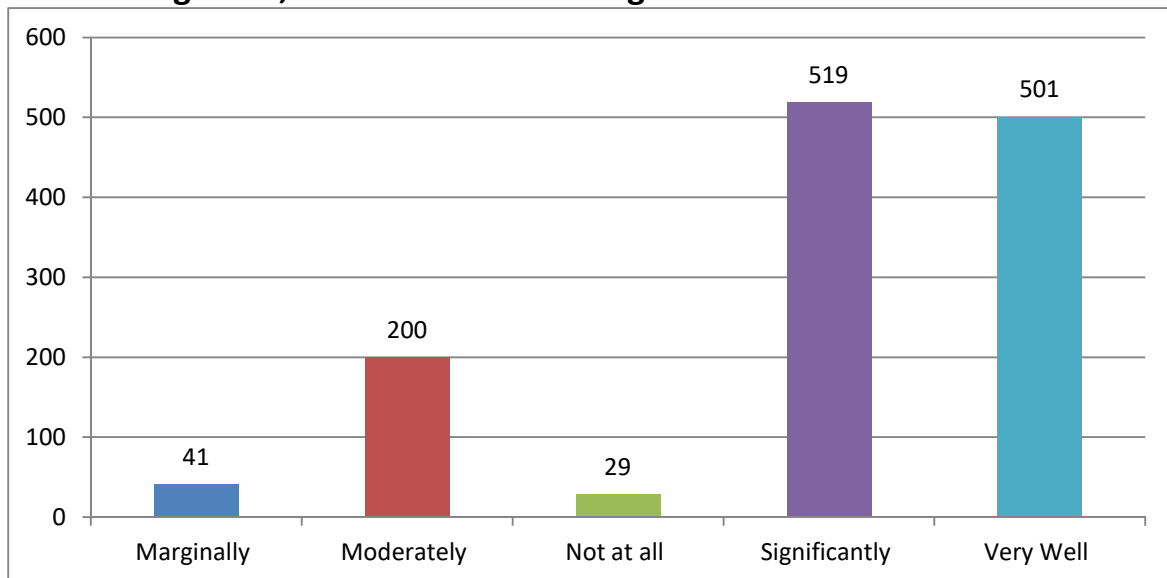
Total Respondents: 1290

7) The institute takes active interest in promoting internship, student exchange, and field visit opportunities for students.



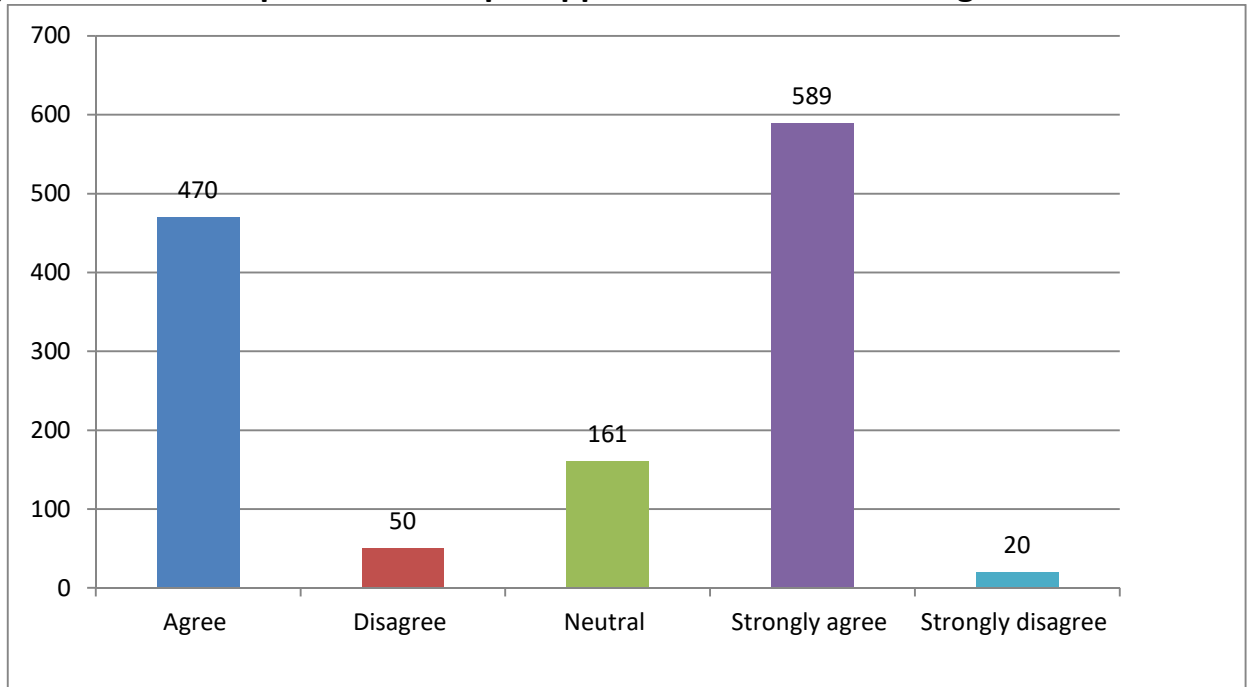
Total Respondents: 1290

8) The teaching and mentoring process in your institution facilitates you in cognitive, social and emotional growth.



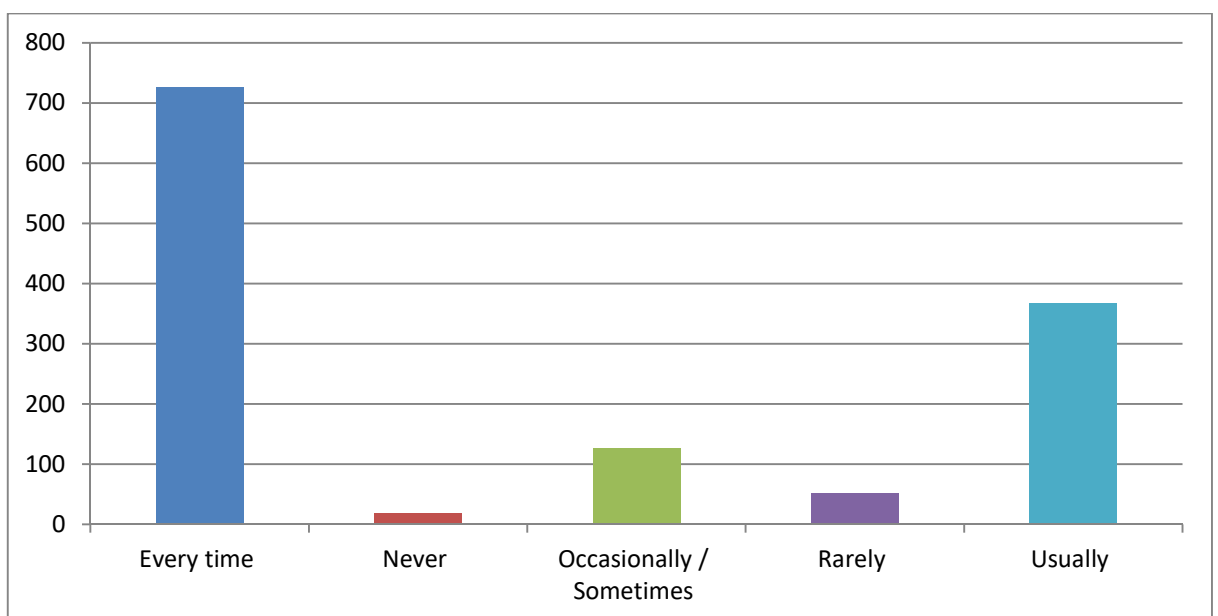
Total Respondents: 1290

9) The institution provides multiple opportunities to learn and grow.



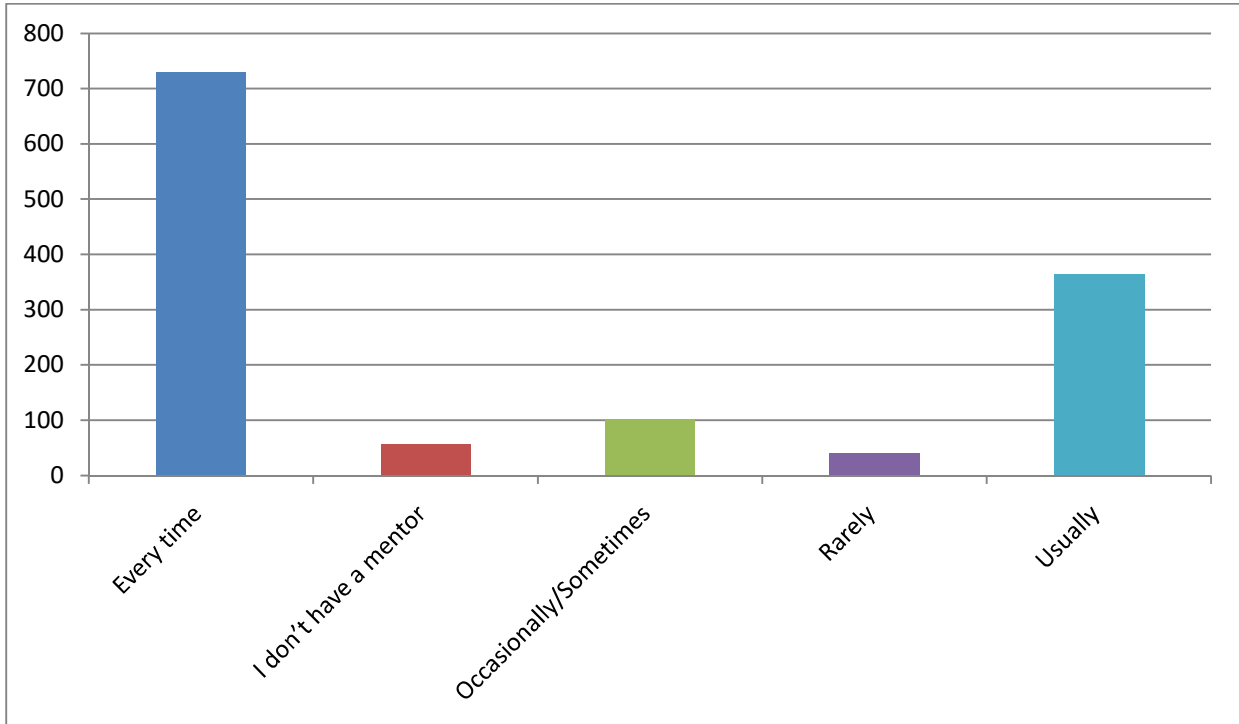
Total Respondents: 1290

10) Teachers inform you about your expected competencies, course outcomes and programme outcomes.



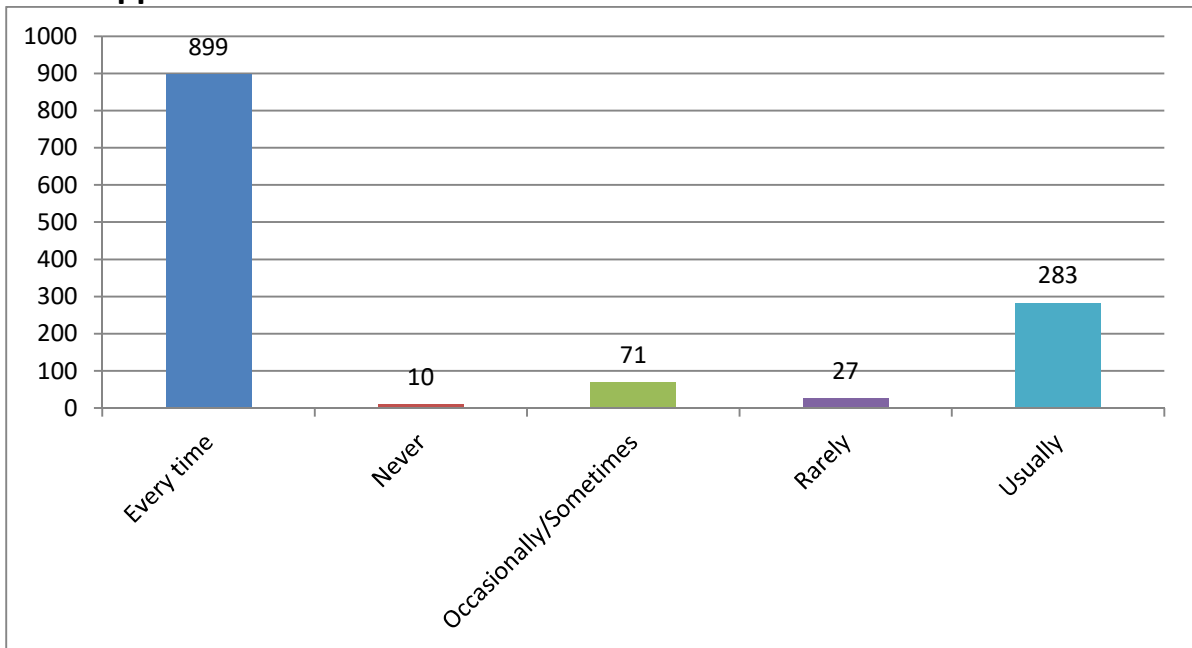
Total Respondents: 1290

11) Your mentor does a necessary follow-up with an assigned task to you.



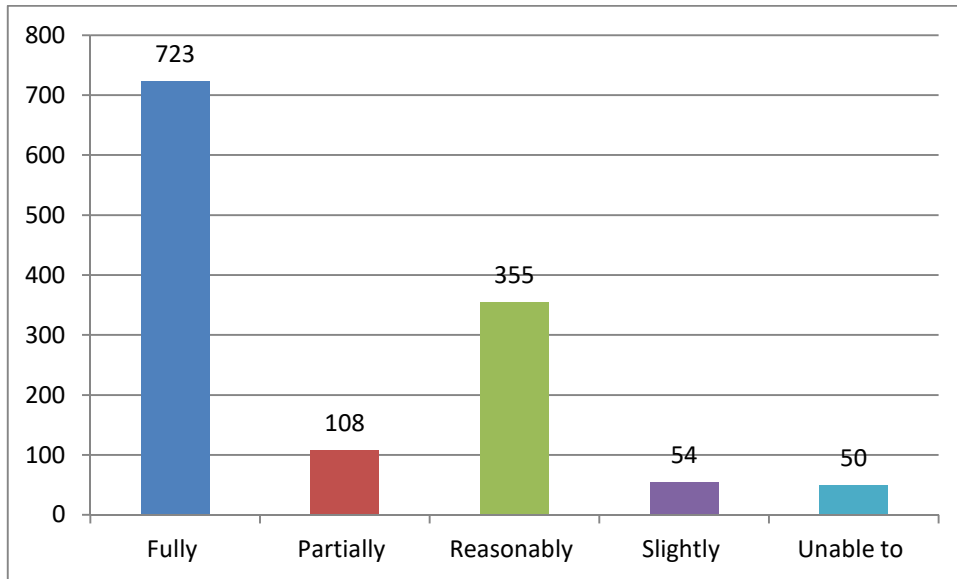
Total Respondents: 1290

12) The teachers illustrate the concepts through examples and applications.



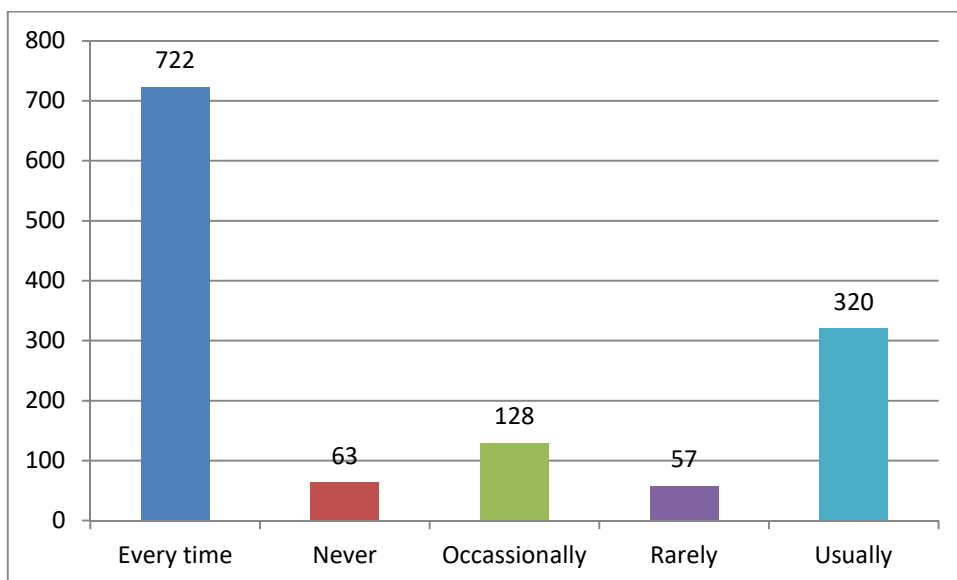
Total Respondents: 1290

13) The teachers identify your strengths and encourage you with providing right level of challenges.



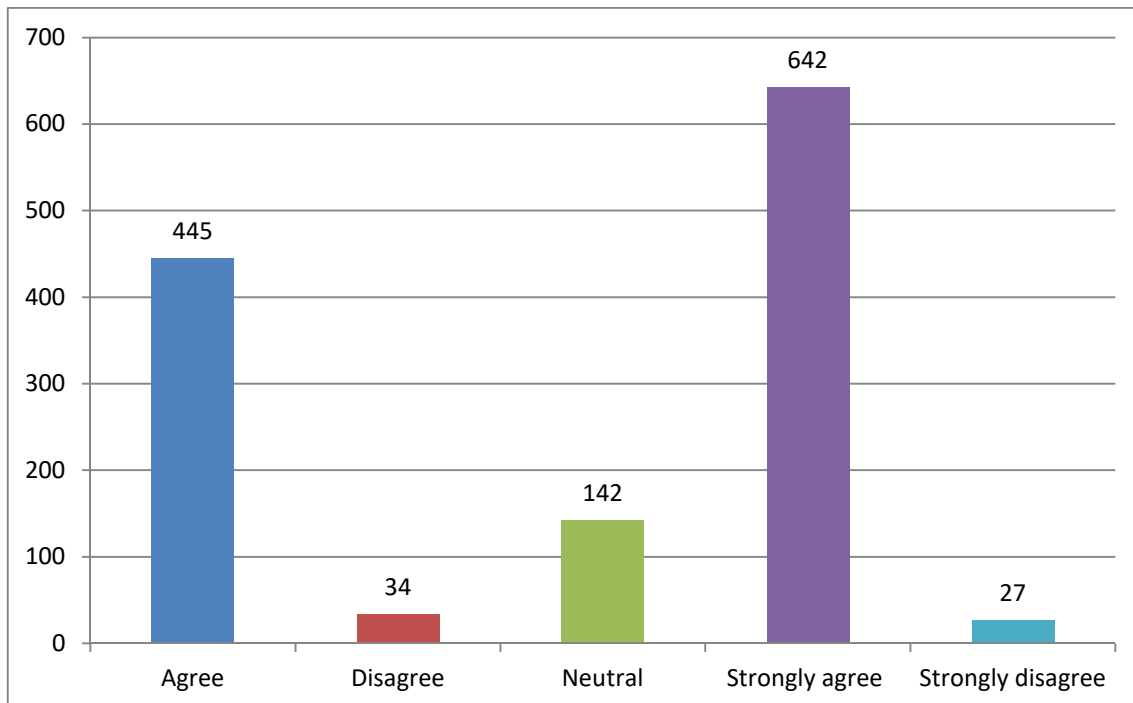
Total Respondents: 1290

14) Teachers are able to identify your weaknesses and help you to overcome them.



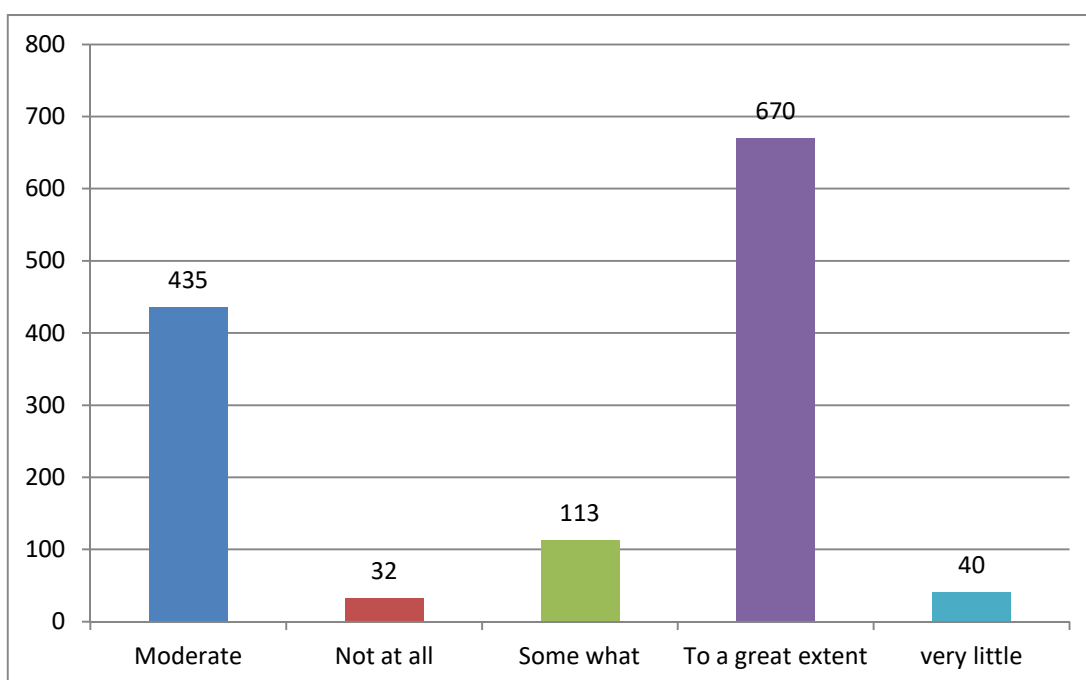
Total Respondents: 1290

15) The institution makes effort to engage students in the monitoring, review and continuous quality improvement of the teaching learning process.



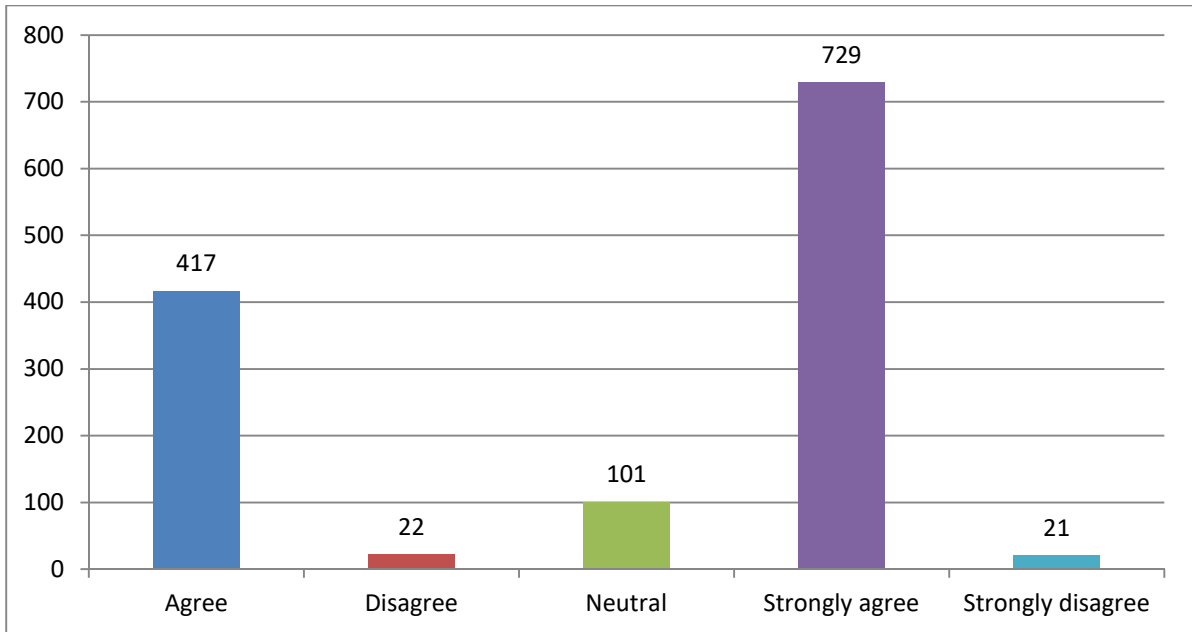
Total Respondents: 1290

16) The institute/ teachers use student centric methods, such as experiential learning, participative learning and problem solving methodologies for enhancing learning experiences.



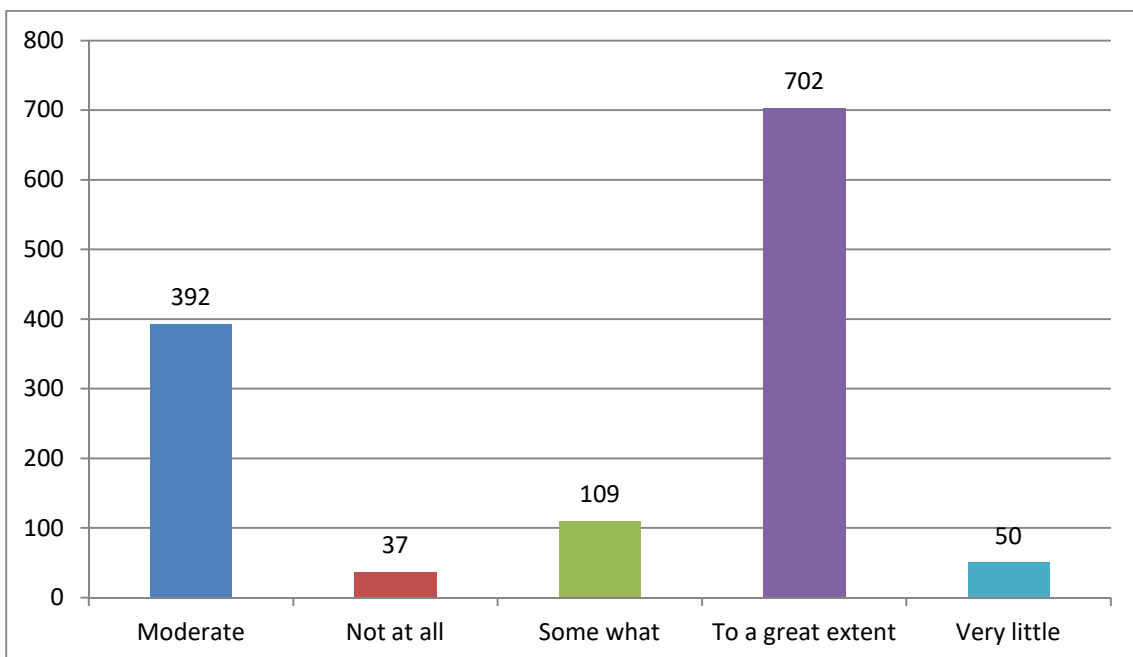
Total Respondents: 1290

17) Teachers encourage you to participate in extracurricular activities.



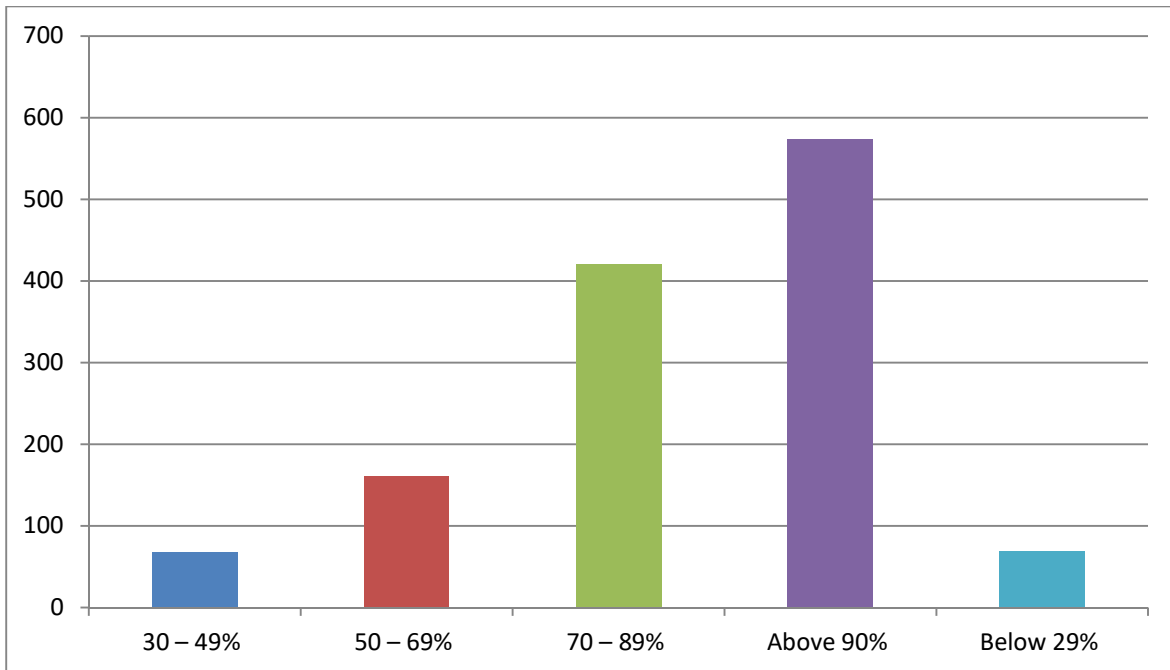
Total Respondents: 1290

18) Efforts are made by the institute/ teachers to inculcate soft skills, life skills and employability skills to make you ready for the world of work.



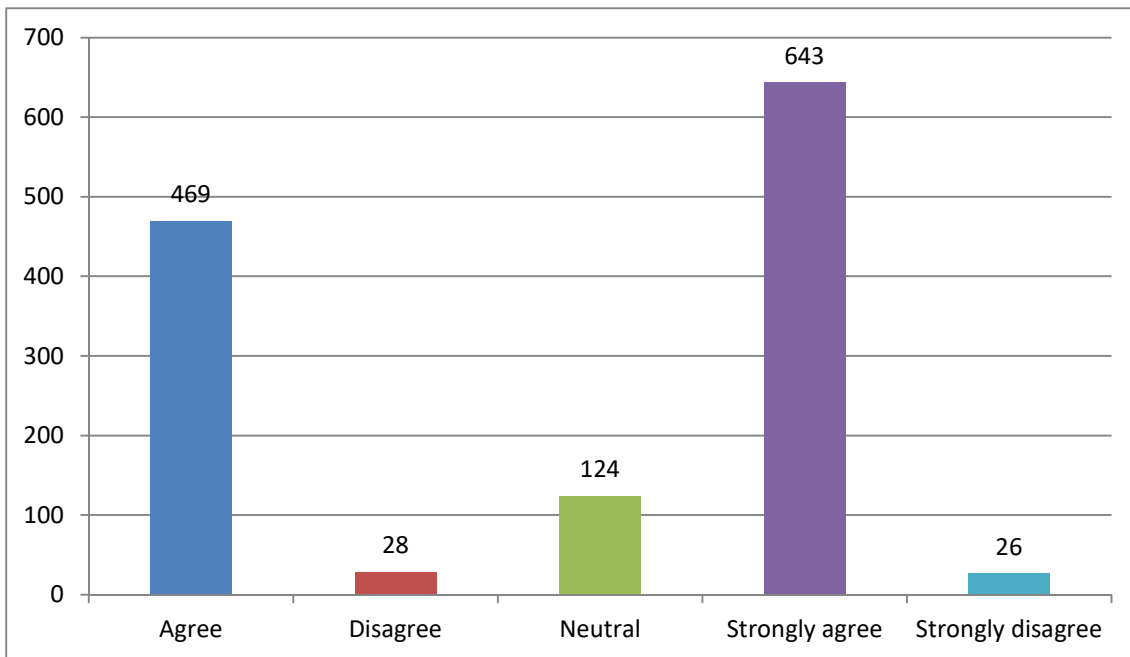
Total Respondents: 1290

19) What percentage of teachers use ICT tools such as LCD projector, Multimedia, etc. while teaching.



Total Respondents: 1290

20) The overall quality of teaching-learning process in your institute is very good.



Total Respondents: 1290